



Since 1915  
**Tucker**

W. L. TUCKER SUPPLY COMPANY, INC.  
"The Best Names In Construction Are Under Our Roof!"

2800 Second St.  
Cuyahoga Falls  
OH 44221

WWW.WLTUCKER.COM / CALL: 330.928.2155



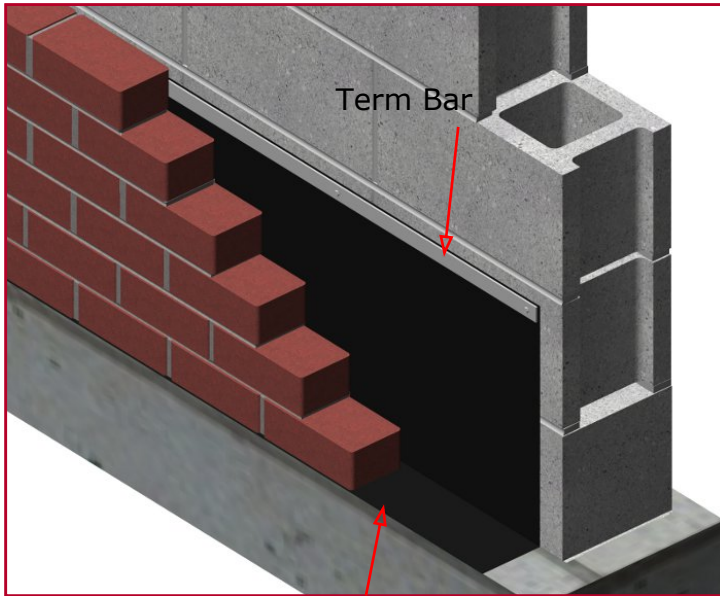
# PRODUCT SUBMITTAL

## PVC Flashing



DESCRIPTION
A non-reinforced polyvinyl chloride, waterproofed, impermeable sheet, composed of elastomeric substances which have been reduced to a thermoplastic state and formed into a continuous sheet

TECHNICAL DATA
The material is suitably stabilized to resist exposure without physical deterioration when tested in accordance with <b>A.S.T.M. standard D-822</b> for a period of not less than 400 hours. It is resistant to acids, alkalis and caustics. <b>RECOMMENDED FOR CONCEALED APPLICATIONS ONLY.</b>
<b>PHYSICAL CHARACTERISTICS ****</b>
<b>Color</b> Black
<b>Specific Gravity</b> 1.28-1.33 ASTM D-792
<b>Tensile Strength</b> 2200 to 2800 Psi ASTM D-882 & 412
<b>Elongation (%)</b> 250 ASTM D-882 & 412
<b>Graves Die Tear</b> 450 lbs./inch ASTM D-1004
<b>Elemendorf Tear</b> 150 (gram/mil) ASTM D-689
<b>Masland SPI Cold Crack</b> -10° + -5° F. ASTM D-1543
<b>Cold Flex</b> No cracks at 20°F. 1/32" Mandrel
<b>Weatherometer (5,000 hrs.)</b> No change ASTM D-822
<b>Hardness Shore A</b> 80 ASTM D-676
<b>Brittleness Temp.</b> -57° C. ASTM D-746
<b>Volatile Loss (24 hours. 70° C.)</b> 1.05% ASTM D-1203
<b>Water Vapor Transmission (Grams/100 sq. inch)</b> 0.24 240 hrs. 212° F
<b>Staining</b> None 240 hrs. 212° F.



PVC Flashing

FEATURES	SIZES
PVC Flashing membrane is intended for use as a concealed waterproofing membrane on foundation walls and under concrete slabs and is often used as thru-wall flashing. Material will not be physically deformed when stretched at room temperature nor will it tear or rip. It will show no cracking or flaking when bent through 180 degrees over a 1/32" mandrel and then bent at the same point over the same size mandrel in the opposite direction through 360 degrees.	<p><b>THICKNESS:</b></p> <p><input type="checkbox"/> 20 Mils (.020") weighing approx. 22 ounces per sq. yd.</p> <p><input type="checkbox"/> 30 Mils (.030") weighing approx. 33 ounces per sq. yd.</p> <p><b>STANDARD LENGTH:</b> 150 lineal feet per roll</p> <p><b>STANDARD WIDTHS:</b></p> <p><input type="checkbox"/> 12"   <input type="checkbox"/> 16"   <input type="checkbox"/> 18"   <input type="checkbox"/> 24"   <input type="checkbox"/> 36"</p>



**Corporate Office:** 400 Rountree Rd Charlotte, NC 28217  
TEL: (800) 849-6722 FAX: (704) 525-3761

**Mailing Address:** P.O. Box 240988 Charlotte, NC 28224



www.wirebond.com

**Memphis Plant:** 2365 Harbor Ave. Memphis, TN 38113  
TEL: (800) 441-8359 FAX: (901) 775-9449

**Mailing Address:** P.O. Box 13124 Memphis, TN 38113