

ADVANCED
Building Products Inc.



Since 1915
Tucker
W. L. TUCKER SUPPLY COMPANY, INC.
"The Best Names In Construction Are Under Our Roof!"

2800 Second St.
Cuyahoga Falls
OH 44221

Specification Bulletin No. 200

WWW.WLTUCKER.COM

CALL: 330.928.2155

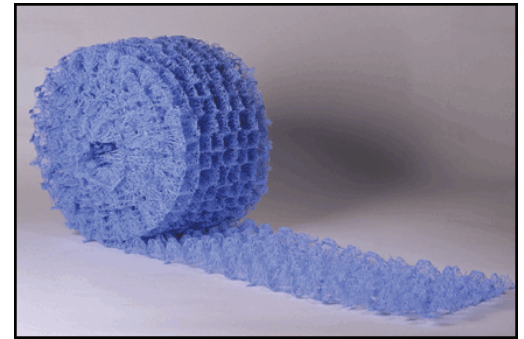
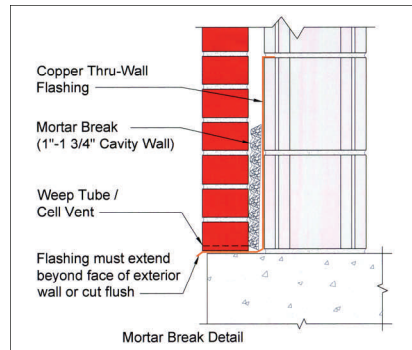
Mortar Break®

The Complete Mortar Deflection and Air Filtration System

Over 20 years ago Advanced Building Products, a leading manufacturer of thru-wall flashing, saw the need for a less labor intensive way to keep head joints free from mortar droppings. With this thought in mind we introduced our Mortar Break® system. Since its inception, Mortar Break® has been the cost efficient way to keep head joints free from mortar droppings, while saving significant labor costs during the installation phase. Made from 40% recycled materials, this unique and proven effective mortar deflection device qualifies for L.E.E.D. rating system credits.*

* Will not support mold growth.

Advanced Building Products recently had its Mortar Break® system tested by an independent test lab (Architectural Testing Inc. of York, PA). The Mortar Break® system exceeded the expectations of experts as a mortar deflection device. Additionally, the air infiltration results surpassed that of the competition.



Basic Use:

- For use at all flashing locations, such as cavity, composite, single wythe and veneer applications (see detail).
- The polymer core geomatrix design allows moisture to seep down through any mortar droppings and weep out of the wall through the cell vents or weep holes.
- Mortar Break®, used with properly installed flashing and weep systems along with good mortar applying techniques, will ensure the performance of a well designed masonry wall.

Short-Form Specification:

The mortar deflection device in a 1" cavity wall shall be Mortar Break® polymer core geomatrix composed of polypropylene strands woven into a .80" thick mesh, as manufactured by Advanced Building Products, Inc. The product shall be installed in accordance with manufacturers' recommendations.

Properties:

Tensile Properties: ASTM D5035
Strength at Ultimate (lbs/ft):
Roll Direction 285 lbs/ft
Cross Roll Direction 310 lbs/ft
Elongation:
Roll Direction 60%
Cross Roll Direction 55%

Dimension & Weight:

Core Weight 21.3 oz/yd²
Thickness .80 inches
Width 10.0 inches
Roll Length 50.0 feet
Roll Gross Weight 4.5 lbs
Sizes:
10" x 50' (4 Rolls/Box)
13" x 50' (3 Rolls/Box)
16" x 50' (2 Rolls/Box)



P.O. Box 98, Springvale, ME 04083
Tel: 1-800-252-2306 or 1-207-490-2306
Fax: 207-490-2998
E-mail: info@advancedflashing.com

www.advancedflashing.com